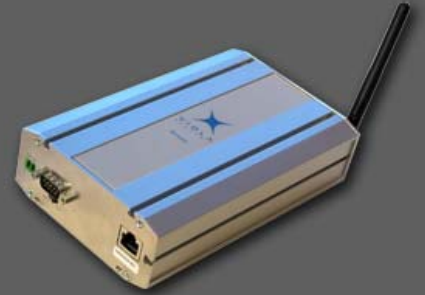




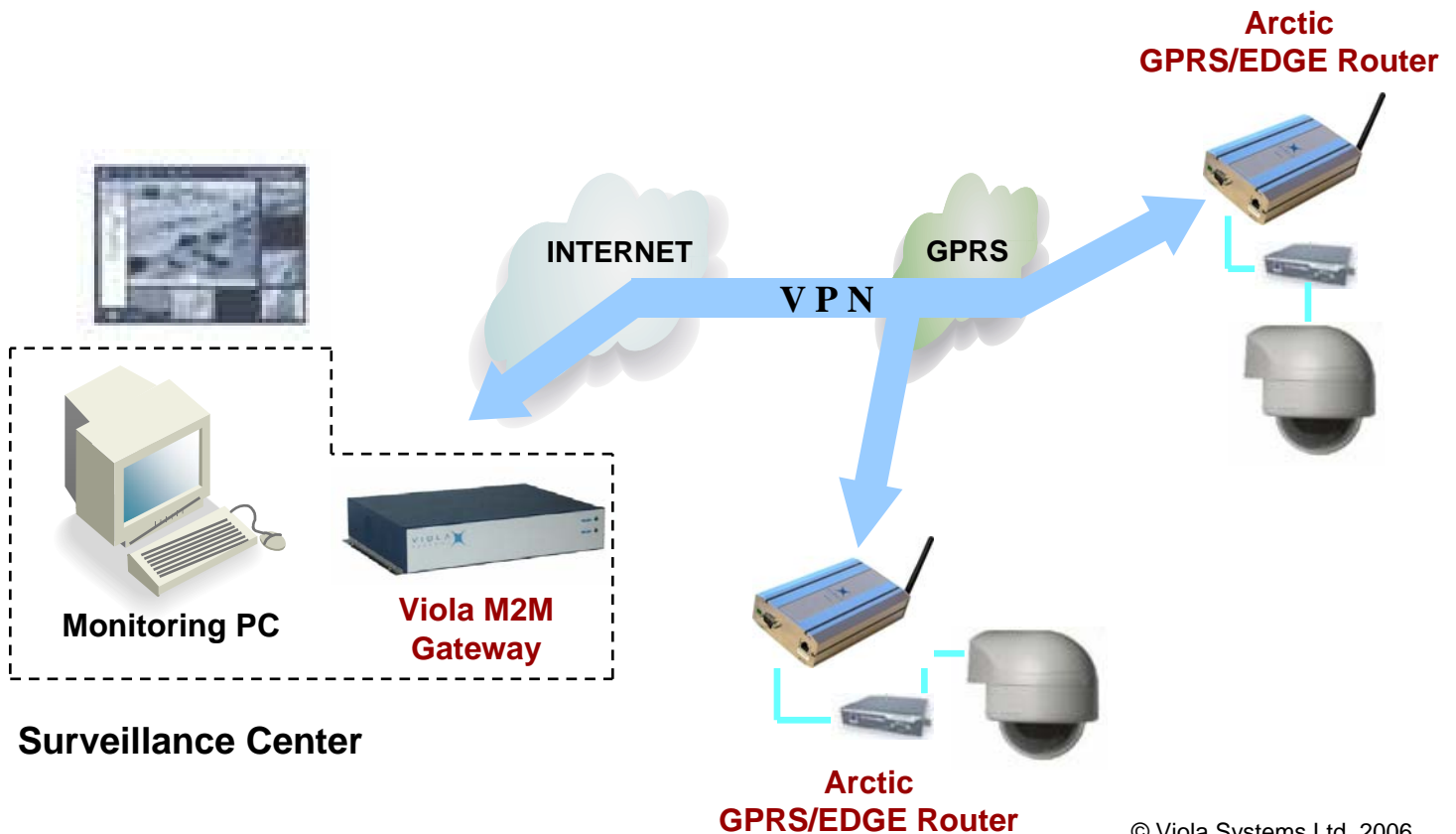
Application Note: Video Surveillance

New Wireless Technologies?

- GPRS for video streaming at lower speeds and still images
- EDGE brings more speed and has good coverage
- 3G is mobile broadband but has poor coverage



- ✓ GPRS speed is more than adequate to transmit video for surveillance purposes (video streaming at lower speed rates)
- ✓ Typical case is to check if somebody has broken in the building, or whether a door switch has been opened
- ✓ GPRS/EDGE solution is easy to implement
- ✓ Can be used with IP also
- ✓ Arctic EDGE Router enables downlink and uplink speeds up to 140kB/s and 55kB/s, respectively



© Viola Systems Ltd. 2006