



Arctic GPRS Router

Straightforward way for arranging independent, secure, always-on connectivity to your managed buildings



Case Study: GPRS Communication in Building Automation

Arctic GPRS Routers Help in Arranging Reliable, Secured IP Connectivity to Managed Buildings

A major Scandinavian player that offers building automation systems faced a challenge. They deploy LON devices and networks in buildings they manage. A need arose to link these isolated LON networks with a centralized management system.

Requirements: easy to deploy, secure, affordable

The solution had to be easy to deploy, secure and yet affordable. After consulting with Viola's experts, a communication solution meeting the selection criteria was found.

The implementation

First, a LON-IP converter will be applied in each managed building site. The LON-IP converter is next attached to Arctic GPRS Router via its Ethernet interface. And finally, the Viola M2M Gateway™ is installed to the same Ethernet LAN where a centralized building management system lies.

The Arctic GPRS Router creates a secure, always-on VPN tunnel to the Viola M2M Gateway™. The Viola M2M Gateway™ handles the messaging between all the Arctics in the managed buildings and the centralized building management system.

Why Viola?

Networking has to be easy. With Viola's solution it truly is. In case fixed connection is not available, GPRS and EDGE mobile networks offer good, reliable and likewise always-on alternatives. Unlike many competitors, Viola offers a total end-to-end solution that is both seamless and secure.

It Networks everything!

Whenever there is a need to effortlessly arrange a reliable wireless connectivity to any distributed site or device, **such as a building**, the Arctic GPRS Router, featuring a built-in firewall and VPN, is a robust, versatile and easy to deploy solution.

Want to know more?

Call our number +358-(0)201-226 226 or send email at terho.into@violasystems.com.

For more information, please visit at www.violasystems.com



Key Benefits of the Viola M2M Solution™

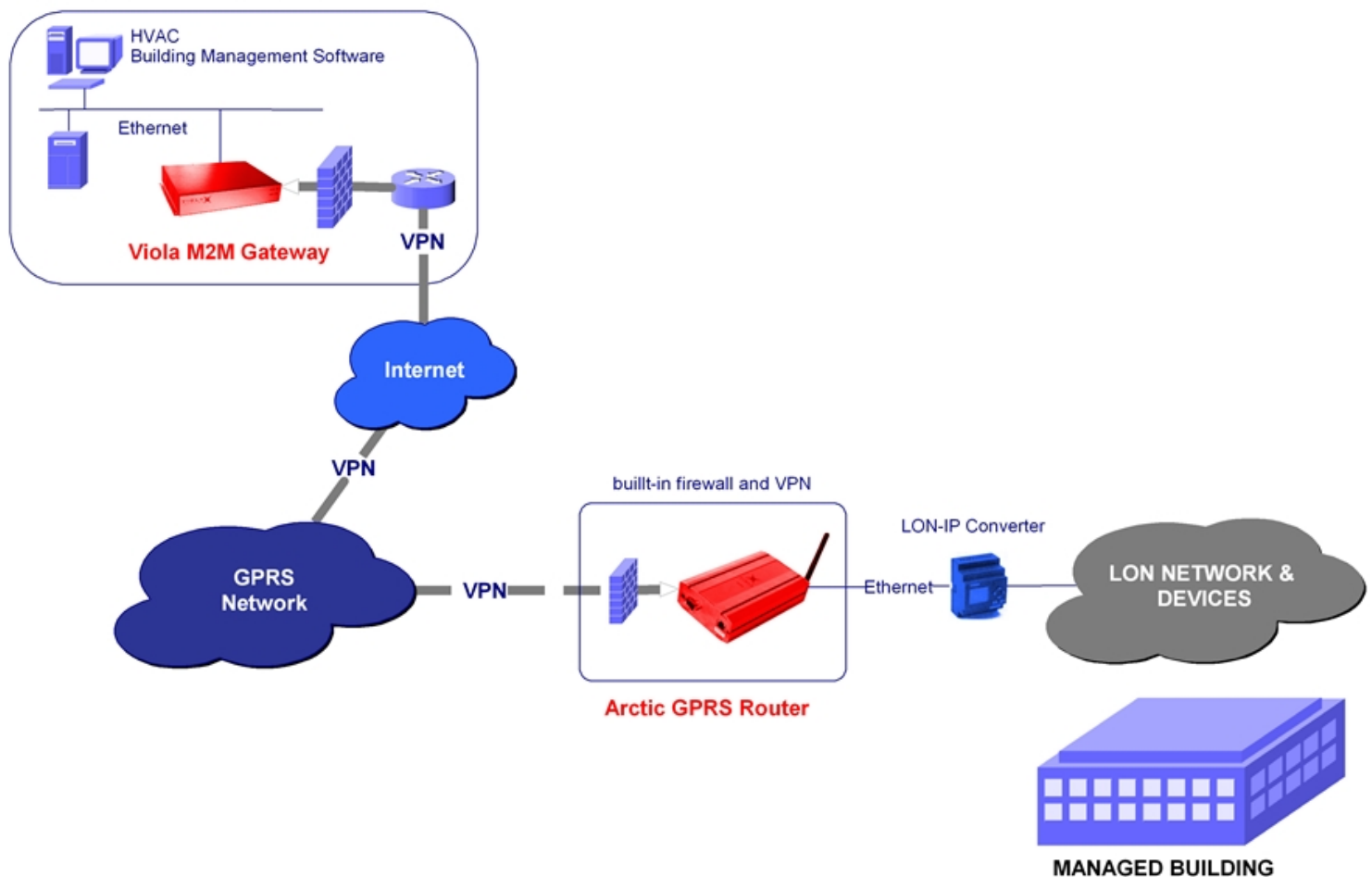
- ✓ Avoid the need to agree on opening of the firewall with the estate owner
- ✓ Fixed connection might be difficult or costly to arrange
- ✓ Extremely easy to install and deploy
- ✓ Transparency: all LON stations will be visible in the building automation system
- ✓ Always-on, secure

Industry:	Building Automation
Customer:	A Major Player
Solution:	Arctic GPRS Router + Viola M2M Gateway™

Key Benefits of the Viola M2M Solution™

- ✓ Avoid the time-consuming and tricky negotiations with the estate owner on opening a hole to his/her firewall of the existing network
- ✓ Fixed connection might be difficult or costly to arrange; the Viola M2M Solution™ works in any place where a GPRS/EDGE network is present
- ✓ Extremely easy to install and deploy: "15 minutes – up and running"
- ✓ Transparency: all LON stations can now be visible in the building automation system
- ✓ Always-on, secure; automatic connection re-establishment

BUILDING MANAGEMENT CENTER



About Viola M2M Solution™

Unlike many competitors who sell boxes, Viola delivers a total secure end-to-end connectivity solution that seamlessly integrates remote devices and sites to centralized management systems such as SCADA or HP OpenView. No changes to existing systems are needed. Viola M2M Solution™ is an install-and-forget-it, hassle-free approach. In addition, Viola M2M Solution™ is operator-independent; it allows customers to implement two-way data communications in a similar manner all around the world.

Contact information

Viola Systems Ltd.
Lemminkäisenkatu 14-18B
FIN-20520, Turku
Finland

Tel +358-(0)201-226 226
Fax +358-(0)201-226 220
Email info@violasystems.com
Web www.violasystems.com